

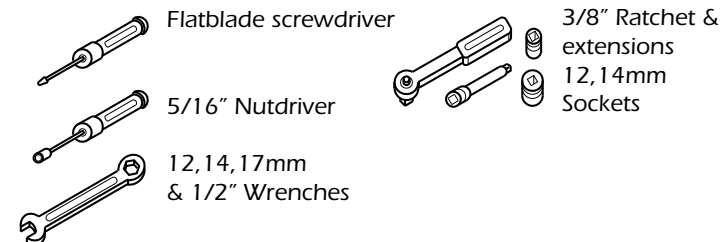
MORE POWER : LESS NOISE



Congratulations, you have purchased the finest exhaust system for your motorcycle on the market. Your Vance & Hines exhaust system is designed and crafted for maximum performance, a perfect fit, a great sound and unbeatable style. Please follow the installation instructions below and if you have any questions, please call our technical support line at (562) 926-5291.

Attention installer (if other than owner), please forward this instruction sheet to the owner of this product. These instructions contain valuable information to the end user.

**TOOLS
REQUIRED**



READ ALL INSTRUCTIONS BEFORE BEGINNING INSTALLATION

**STOCK EXHAUST
SYSTEM REMOVAL**

1. Remove right side frame cover.
2. Remove right side footpeg assembly held in place by two bolts.
3. Remove exhaust port nuts.
4. Remove bolts securing muffler to exhaust system mounting bracket.
5. Remove complete exhaust system (assistance may be required).
6. Remove two bolts attaching stock exhaust mounting bracket to frame.

FIGURE 1



Install mount
bracket 383-P

FIGURE 2

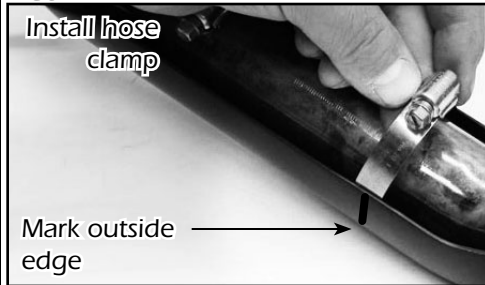


FIGURE 3

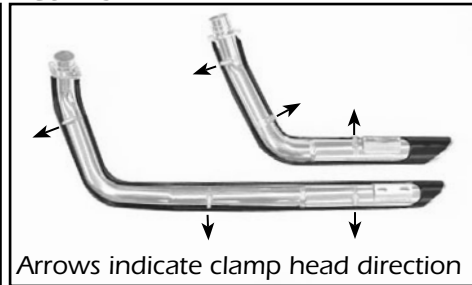


FIGURE 4

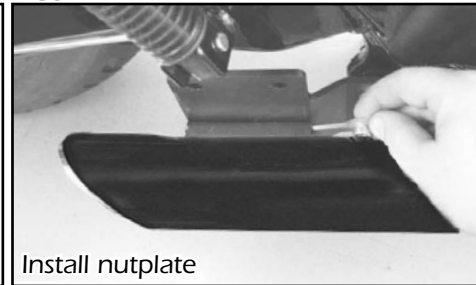


FIGURE 5



1. Check condition of stock exhaust gaskets. Replace if damaged or worn.
2. Install mounting bracket (stamped 383-P) in the original bracket mounting position, using two 10mm bolts and nuts (Supplied) (Figure 1).
3. Remove head pipes and heat shields from protective packaging. Place each heat shield on a non-abrasive surface such as a blanket or carpet. Using a pencil, carefully mark the outside edge of each heat shield to show location of hose clamp mounting clips (Figure 2).
4. Lay head pipes into their respective heat shields. Loosely install hose clamps by feeding tail end of clamp into heat shield clips (Figure 2). Take note of screw head direction (Figure 3). Screw head should be accessible when system is installed on motorcycle for adjustment purposes. Use #20 hose clamps for head pipe areas and #28 hose clamps for muffler areas.
5. Using stock nuts, carefully install front head pipe into exhaust port (Assistance may be required). NOTE: Do not tighten at this time.
6. Slide nutplate inside bracket welded to backside of muffler body (Figure 4). While holding nutplate in place, attach muffler body to mounting bracket 383-P using two 5/16"x5/8" flange head bolts (Supplied). Leave them loose at this time.
7. Repeat for rear head pipe.
8. Align exhaust pipes so they are parallel when viewing from the right side of the bike.
9. Tighten cylinder port exhaust nuts on front and rear cylinders. Tighten the flange bolts on both mufflers. NOTE: Adjust angle of bracket 383-P to aid alignment of head pipes.
10. Tighten bolts securing mount bracket 383-P to frame.
11. Align heat shield tips so that muffler bodies protrude 1/4" (Figure 5). Tighten all heat shield clamps.
12. Reinstall right side footpeg.
13. Reinstall side cover.
14. Check for adequate clearance between all exhaust system components and motorcycle accessories prone to heat damage.
15. After installation and before starting your motorcycle, completely clean slip-on's with warm soapy water and a clean soft cloth. Dry with a clean towel. NOTE: any residue, oil, or fingerprints will stain the black coating. Do NOT use anything abrasive to clean the pipes as it may remove the finish.
16. Be sure to tighten all hardware before starting motorcycle.

EXHAUST CARE - HELPFUL HINTS TO AVOID DISCOLORATION OF EXHAUST SYSTEM

1. When installing a new set of black pipes, make sure your hands are clean and free of oil. After installation, thoroughly clean pipes with warm soapy water and a soft cloth. Dry with clean towel to remove any residue before starting the motorcycle. Do NOT use anything abrasive to clean pipes.
2. Avoid long periods of idling as this can cause discoloration.
3. Intake leaks can cause the engine to run lean and overheat, this could lead to discoloration.
4. Make sure there are no exhaust leaks at the junction of the exhaust pipes and cylinder head. We recommend replacing gaskets if they are worn.

VANCE & HINES OPTIONAL ACCESSORIES

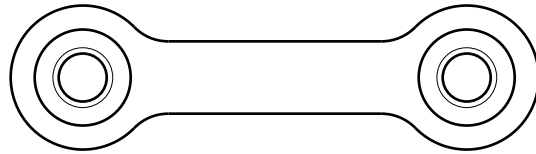
QUIET BAFFLE



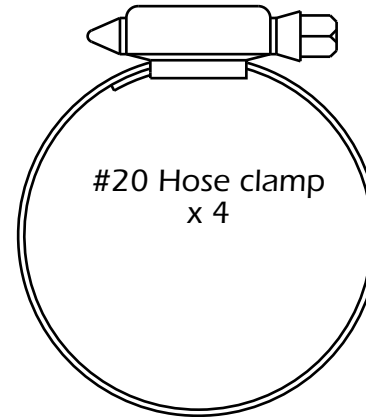
Quiet baffle P/N 21301 is available for this system. The quiet baffle will lower the sound level by 2-3db on average. Contact your local dealer to order.

PLEASE NOTE: Every effort is made for Vance & Hines Exhaust Systems to provide improved cornering clearance. However, due to design and space limitations on some motorcycle models, ground and cornering clearance may not be improved and in some cases may be reduced. Be sure to follow proper installation instructions.

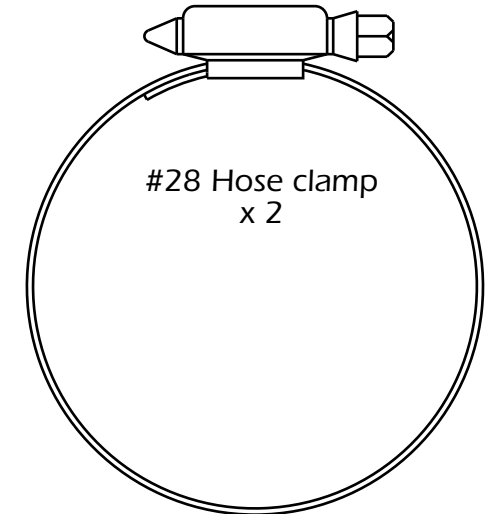
PACKING LIST



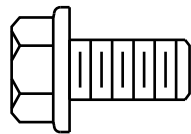
Nutplate x 2



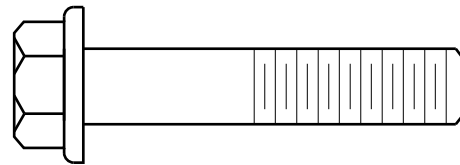
#20 Hose clamp
x 4



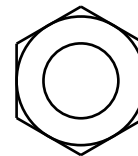
#28 Hose clamp
x 2



5/16" x 5/8"
Flange head bolt x 4



10mm x 50mm
Flange head bolt x 2



10mm Locknut x 2

ALL PARTS SHOWN ARE ACTUAL SIZE

MORE POWER : LESS NOISE

PARTS NOT SHOWN:

- 383-P Mounting bracket x 1
- H285FC Front head pipe x 1
- H286FC Rear head pipe x 1
- H287HP Front heat shield x 1
- H288HP Rear heat shield x 1

WARRANTY

Vance & Hines exhaust systems are warranted against defects in material and workmanship for a period of 90 days from the date of purchase from an authorized dealer. This warranty does not cover discoloration of chrome finishes. This warranty is limited to the repair or replacement of a product proven to be defective from normal use. Vance & Hines exhaust systems are designed to fit and operate on OEM motor and chassis. This warranty does not cover any product subject to abuse, misuse, improper installation or modification.

FUEL MANAGEMENT

GET THE MOST OUT OF YOUR RIDING EXPERIENCE...

AN AFTERMARKET EXHAUST SYSTEM IS ONLY YOUR FIRST STEP, NOW YOU NEED FUEL MANAGEMENT.

NOW YOU NEED FUELPAK.

If Your motorcycle is fuel injected, it will be equipped with an ECU (electronic control unit) that's programmed to deliver fuel to the motor based on an air/fuel ratio for a stock air filter and stock exhaust system. When you install a performance exhaust system, your airflow changes, so you need a fuel management system that adjusts your air/fuel ratio to match the changes. That fuel management system is Fuelpak. Fuelpak adds and takes away fuel, allowing for a more precise range of refinement in your air/fuel ratio. Get the perfect fuel management combination with your Vance & Hines exhaust system, get Fuelpak. For more information visit the tuning center at fuelpakfi.com

NOTICE: Fuelpak is intended for racing or off-highway use only, and is not legal for sale or use in California on pollution-controlled vehicles.



MORE POWER : LESS NOISE

13861 ROSECRANS AVENUE / SANTA FE SPRINGS, CA 90670
SALES: (562) 921-7461 / TECHNICAL: (562) 926-5291 / FAX: (562) 802-0110
VANCEANDHINES.COM