

MORE POWER : LESS NOISE



Congratulations, you have purchased the finest exhaust system for your motorcycle on the market. Your Vance & Hines exhaust system is designed and crafted for maximum performance, a perfect fit, a great sound and unbeatable style. Please follow the installation instructions below and if you have any questions, please call our technical support line at (562) 926-5291.

Attention installer (if other than owner), please forward this instruction sheet to the owner of this product. These instructions contain valuable information to the end user.

**TOOLS
REQUIRED**

- Flat blade screwdriver
- 5/16" Nutdriver
- 1/2" & 9/16" Combination wrenches
- 3/8" Ratchet, extensions
- 12mm, 14mm, 1/2" & 9/16" Sockets

READ ALL INSTRUCTIONS BEFORE BEGINNING INSTALLATION

**STOCK EXHAUST
SYSTEM
REMOVAL**

1. Loosen heat shield clamps on both the front and rear head pipes.
2. Remove two cylinder exhaust port flange nuts from each head pipe, located at the cylinder head.
3. Remove bolts and nuts that attach mufflers to mounting brackets.
4. Remove the complete exhaust system and set aside. Assistance may be required.
5. Remove stock mounting brackets. Save upper mounting bracket bolts, they will be reused for new system installation.

FIGURE 1



Use these two holes to install bracket 440-p

FIGURE 2



FIGURE 3

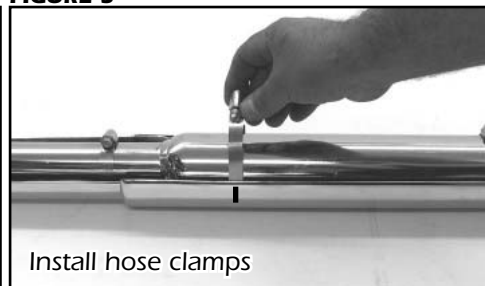


FIGURE 4

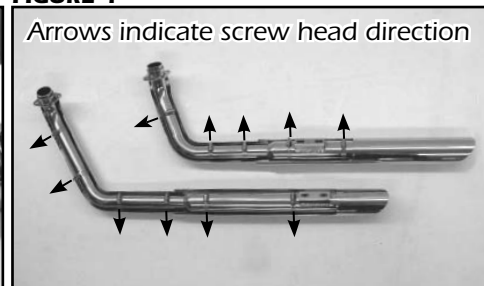


FIGURE 5



VANCE & HINES EXHAUST SYSTEM INSTALLATION

1. Attach mounting bracket 440-P to frame using two stock flange head bolts used on stock upper bracket (Figures 1 and 2).
2. Remove head pipes and heat shields from protective packaging. Place each heat shield on a non-abrasive surface such as a blanket or carpet. Using a felt tip pen, mark outside edge of each heat shield to show location of mounting clips that hose clamps will loop through (Figure 3).
3. Lay front header, and rear header into their head heat shields and muffler body heat shields.
4. Install #20 hose clamps (supplied) on heat shields and #36 (supplied) on muffler body heat shields by feeding tail end of clamps into heat shield clips (figure 3). Take note of clamp screw head direction (Figure 4). Screw heads must be accessible when system is installed on motorcycle for adjustment purposes. NOTE: Do not tighten at this time.
5. Using stock flange nuts, carefully install head pipes into exhaust ports. Assistance may be required. NOTE: Do not tighten at this time.
6. Slide nut plates inside bracket that is welded to backside of muffler bodies (Figure 5). While holding nut plates in place, attach muffler bodies to mounting bracket 440-P using two 5/16"x 5/8" flange head bolts (supplied). Leave them loose at this time.
7. Align muffler bodies so they are level and parallel when viewing from the right side of the bike. Tighten cylinder port exhaust flange nuts on front and rear cylinders.
8. Tighten the flange bolts on both mufflers.
9. Tighten all heat shield clamps.
10. Check for adequate clearance of all exhaust system components and motorcycle accessories prone to heat damage. NOTE: For models with floorboards, two Spacer washers are supplied to space out the floorboard bracket enough to allow the floorboard to fold up without hitting the heat shield.
11. Be sure to tighten all hardware before starting your motorcycle.
12. After installation and before starting motorcycle, completely clean pipes and mufflers with cleaning solvent and a clean, soft cloth that will not leave a residue. NOTE: Any residue, oil, or fingerprints will stain the chrome when the metal heats up.

EXHAUST CARE - HELPFUL HINTS TO AVOID DISCOLORATION OF EXHAUST SYSTEM

1. When installing a new set of chrome pipes, make sure your hands are clean and free of oil. After installation, thoroughly clean pipes with a soft cloth and cleaning solvent that will leave no residue (chrome wax / polish, glass cleaner, alcohol, ammonia, etc...) before starting the motorcycle.
2. Avoid long periods of idling as this can cause discoloration.
3. Intake leaks can cause the engine to run lean and overheat, this could lead to discoloration.
4. Make sure there are no exhaust leaks at the junction of the exhaust pipes and cylinder head. We recommend replacing gaskets if they are worn.

VANCE & HINES OPTIONAL ACCESSORIES

FUELPAK



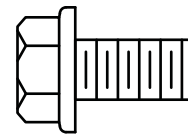
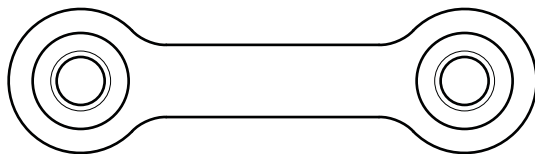
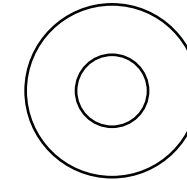
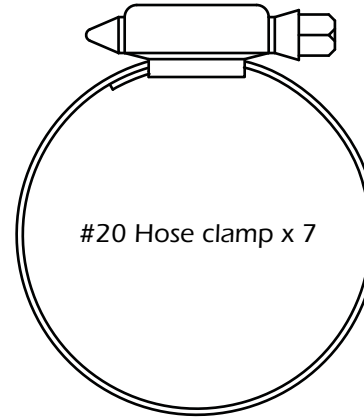
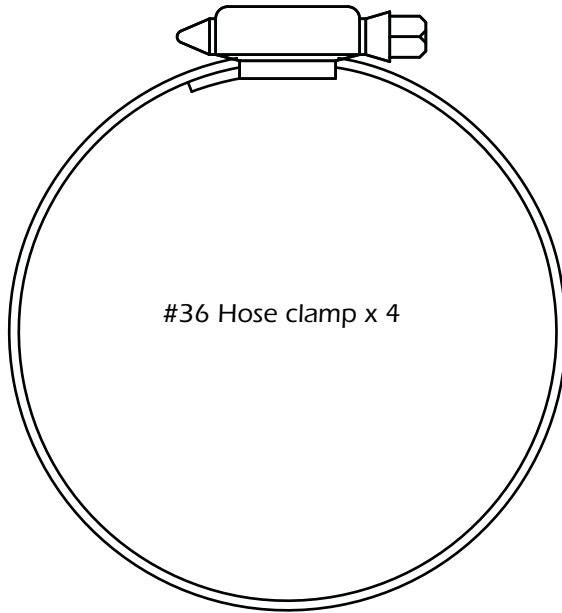
FUEL MANAGEMENT:
Take the guess work out of fuel injection with Fuelpak Fuel Management. Contact your local dealer or call (562) 921-0071 to order. Visit fuelpakfi.com for more information. Fuelpak is intended for racing or off-highway use only, and is not legal for sale or use in California on pollution-controlled vehicles.

PLEASE NOTE: Every effort is made for Vance & Hines Exhaust Systems to provide improved cornering clearance. However, due to design and space limitations on some motorcycle models, ground and cornering clearance may not be improved and in some cases may be reduced. Be sure to follow proper installation instructions.

PACKING LIST

MORE POWER : LESS NOISE

ALL PARTS SHOWN ARE ACTUAL SIZE



PARTS NOT SHOWN:

- 440-P Bracket x 1
- K345FC Front header x 1
- K346FC Rear header x 1
- K345HC Front heat shield x 1
- K346HC Rear heat shield x 1
- K347HC Front muffler body heat shield x 1
- K348HC Rear muffler body heat shield x 1

WARRANTY

Vance & Hines exhaust systems are warranted against defects in material and workmanship for a period of 90 days from the date of purchase from an authorized dealer. This warranty does not cover discoloration of chrome finishes. This warranty is limited to the repair or replacement of a product proven to be defective from normal use. Vance & Hines exhaust systems are designed to fit and operate on OEM motor and chassis. This warranty does not cover any product subject to abuse, misuse, improper installation or modification.

FUEL MANAGEMENT

GET THE MOST OUT OF YOUR RIDING EXPERIENCE...

AN AFTERMARKET EXHAUST SYSTEM IS ONLY YOUR FIRST STEP, NOW YOU NEED FUEL MANAGEMENT.

NOW YOU NEED FUELPAK.

Your fuel injected Harley-Davidson® is equipped with an ECU (electronic control unit) that's programmed to deliver fuel to the motor based on an air/fuel ratio for a stock air filter and stock exhaust system. When you install a performance exhaust system, your airflow changes, so you need a fuel management system that adjusts your air/fuel ratio to match the changes. That fuel management system is Fuelpak. Fuelpak adds and takes away fuel, allowing for a more precise range of refinement in your air/fuel ratio. Get the perfect fuel management combination with your Vance & Hines exhaust system, get Fuelpak. For more information visit the tuning center at fuelpakfi.com

NOTICE: Fuelpak is intended for racing or off-highway use only, and is not legal for sale or use in California on pollution-controlled vehicles.



MORE POWER : LESS NOISE

13861 ROSECRANS AVENUE / SANTA FE SPRINGS, CA 90670
SALES: (562) 921-7461 / TECHNICAL: (562) 926-5291 / FAX: (562) 802-0110
VANCEANDHINES.COM